

adphos NIR-LW

The Light Weight under the Infra Read Heating Systems

Product description:

As a light weight with small overall dimensions the adphos NIR-LW product family has a power density of up to 0.25 MW/m². The biggest advantage of this product family is it's low weight as well as it's independency upon additional infra structure as cooling water or air. Through it's compactness and low weight these modules can be integrated anywhere, if high energy densities on smallest room are required. Especially on applications were systems are accelerated or decelerated these light weight constructions are beneficial as the mounting structure has to take less force.

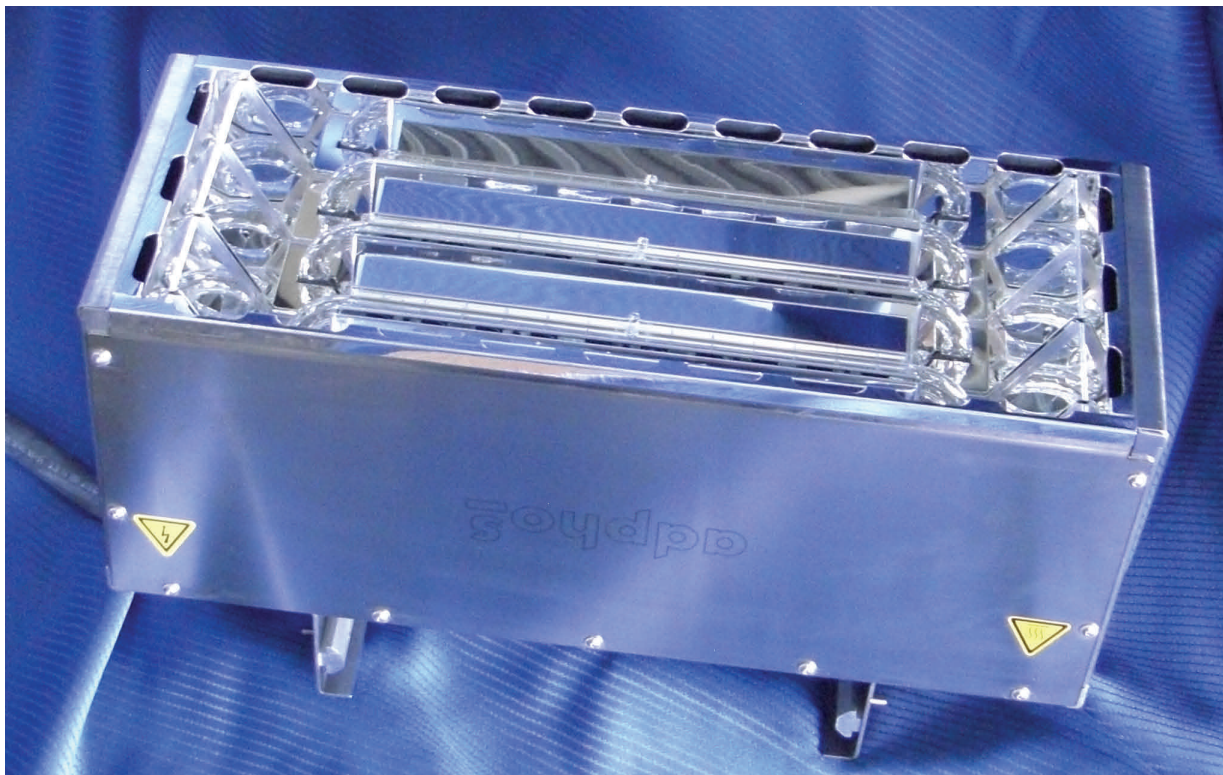
The heated width of the modules vary from 42 to 630 mm. Different NIR emitters allow for different power densities. The NIR-LW product family is the light weight among the area heaters, which are characterised by easy integration into new and existing applications.

Features:

- Compact design as well as flexible fixation guarantee an easy mechanical integration into new and existing systems
- Pre assembled cables (approx. 1.5 m) guarantee an easy electrical integration into new and existing systems
- Different mechanical sizes as well as power densities are optimised for each application
- Instant ON-OFF – No pre heating required

Application Samples:

- Drying and curing of colours, coatings as well as glue on flat surfaces
- Drying of inkjet
- Curing of resin impregnated paper and cloth
- Homogeneous heating of Plastics



Technical Data:

MPP-Type	LW-42	LW-84	LW-126	LW-252	LW-378	LW-504	LW-630
Max Power	2.5 KW	5 KW	7.5 KW	10 KW	22.5 KW	30 KW	37.5 KW
Heated Width	42	84	126	252	378	504	630
Heated Length (LB) [mm]	250	250	250	250	250	250	250
Module Width (BM) [mm]	57	99	141	267	393	519	645
Module Length (LM) [mm]	370	370	370	370	370	370	370
Module height (HM) [mm]	150	150	150	150	150	150	150
Weight [kg]	2.0	2.5	3.0	5.5	8.0	10.5	16.0
Number of Emitters	1	2	3	6	9	12	15

Order Codes:

		LW-42	LW-84	LW-126	LW-252	LW-378	LW-504	LW-630
Heated Width		42 mm	84 mm	126 mm	252 mm	378 mm	504 mm	630 mm
LB-08-250	power	0.8 kW	1.6 kW	2.4 kW	4.8 kW	7.2 kW	9.6 kW	12 kW
	order code	505001	505002	505003	505004	505005	505006	505007
NB-12-250	power	1.2 kW	2.5 kW	3.8 kW	7.5 kW	11.3 kW	15 kW	18.8 kW
	order code	505008	505009	505010	505011	505012	505013	505014
NB-18-250	power	1.8 kW	3.7 kW	5.6 kW	11.3 kW	16.9 kW	22.5 kW	28.1 kW
	order code	505015	505016	505017	505018	505019	505020	505021
HB-25-250	power	2.5 kW	5 kW	7.5 kW	15 kW	22.5 kW	30 kW	37.5 kW
	order code	505022	505023	505024	505025	505026	505027	505028

All here mentioned data are subject to changes due to product optimisation
PDB LW-03en-04/2011